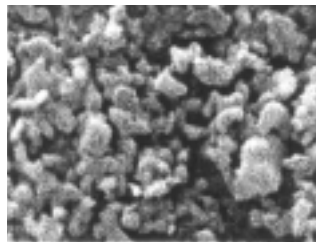
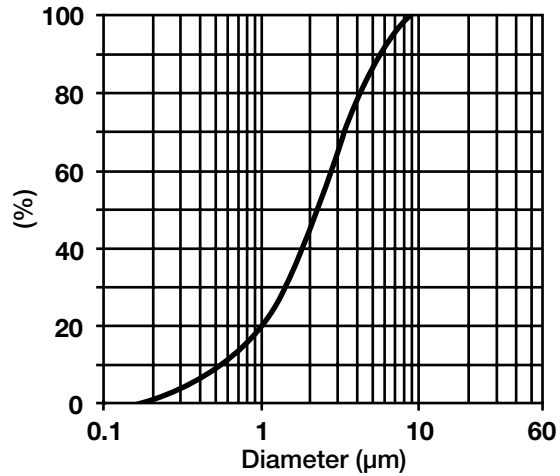


Description

MARTOXID PC-12/1 polishing compound is used in production of polishing pastes and emulsions for fine polishing and repolishing of stainless steel, non-ferrous metals, lacquers, plastics and glass.

Typical Properties

Al ₂ O ₃ , %, approx.	95
Total Na ₂ O, %	≤ 0.5
CaO, %	≤ 0.05
Fe ₂ O ₃ , %	≤ 0.04
SiO ₂ , %	≤ 0.04
Specific surface area (BET), m ² /g	4 - 7
Oil adsorption, ml/100g, approx.	30
Particle size distribution (Cilas 1064)	
d ₁₀ μm	≤ 1
d ₅₀ μm	≤ 1.5
d ₉₀ μm	≤ 20



— 2μm —



— 5μm —

Shipping Information

Container Information

Shipping Classification

Safety and Handling Information

For specific safety, toxicity and handling information, please refer to the material safety data sheet on this product.

Chemical Registration Numbers

CAS:	1344-28-1
EINECS:	215-691-6
MITI:	
KECL:	

The information presented herein is believed to be accurate and reliable, but is presented without guarantee or responsibility on the part of Albemarle Corporation. It is the responsibility of the user to comply with all applicable laws and regulations and to provide for a safe workplace. The user should consider any health or safety hazards or information contained herein only as a guide, and should take those precautions which are necessary or prudent to instruct employees and to develop work practice procedures in order to promote a safe work environment. Further, nothing contained herein shall be taken as an inducement or recommendation to manufacture or use any of the herein materials or processes in violation of existing or future patents.



AMERICAS 451 Florida Street • Baton Rouge, Louisiana 70801-1765 • Tel: 225-388-7402 or 800-535-3030 • Fax: 225-388-7848 **EUROPE** Parc Scientifique Einstein • Rue du Bosquet 9 • B-1348 Louvain-la-Neuve Sud, Belgium • Tel: 32-10-48-1711 • Fax: 32-10-48-1717 **EUROPE** B116 • 95 Rue Du General De Gaulle • F-68802 Thann-Cedex, France • Tel: 33-3-8938-4600 • Fax: 33-3-8938-4601 **ASIA PACIFIC** 111 Somerset Road #13-03 • Singapore 238164 • Tel: 65-6732-6286 • Fax: 65-6737-4155 **ASIA PACIFIC** 16th Floor, Fukoku Seimei Building • 2-2, Uchisaiwaicho, 2-Chome • Chiyoda-ku, Tokyo 100, Japan • Tel: 81-3-5251-0791 • Fax: 81-3-3500-5623 **ASIA PACIFIC** China World Tower, Room 1317 • No. 1 Jian Guo Men Wai Avenue • Beijing 100004 China • Tel: 86-10-6505-4153 or 86-10-6505-4154 • Fax: 86-10-6505-4150